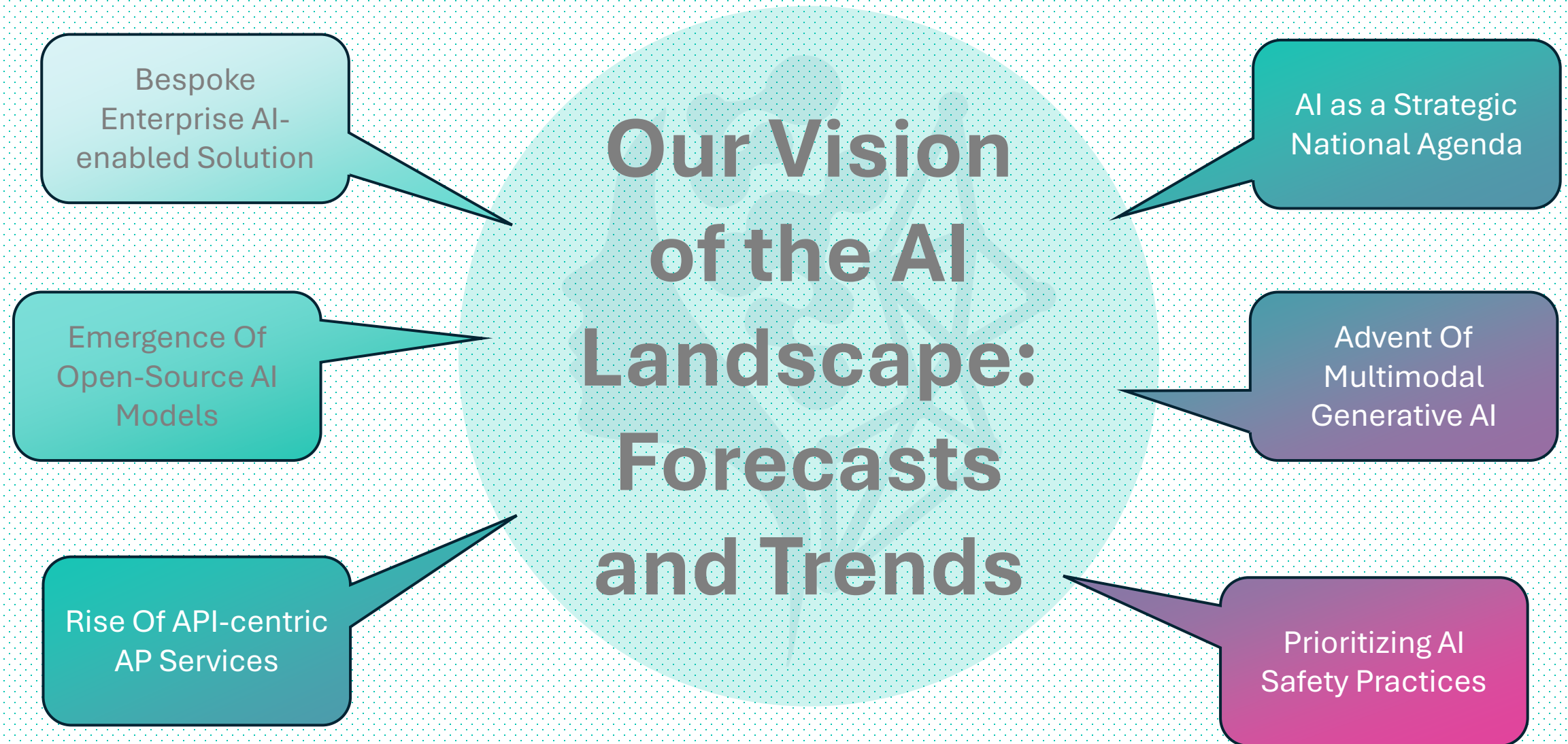


SYVA Data Nexus Overview

*Transformative AI for Comprehensive
Enterprise Insights & Automation*



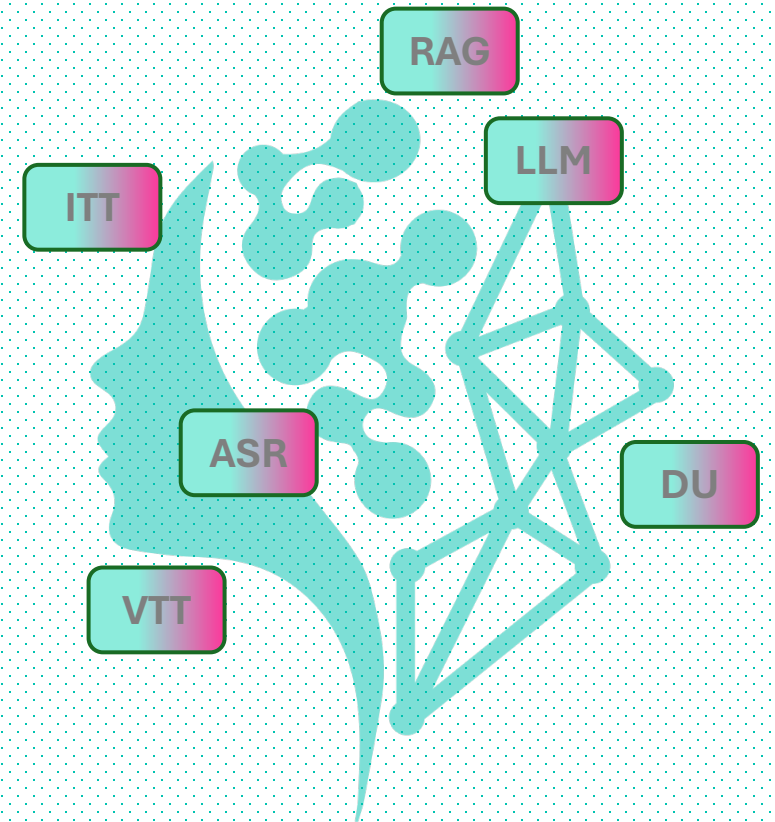
Importance And Relevance In Today's AI Landscape



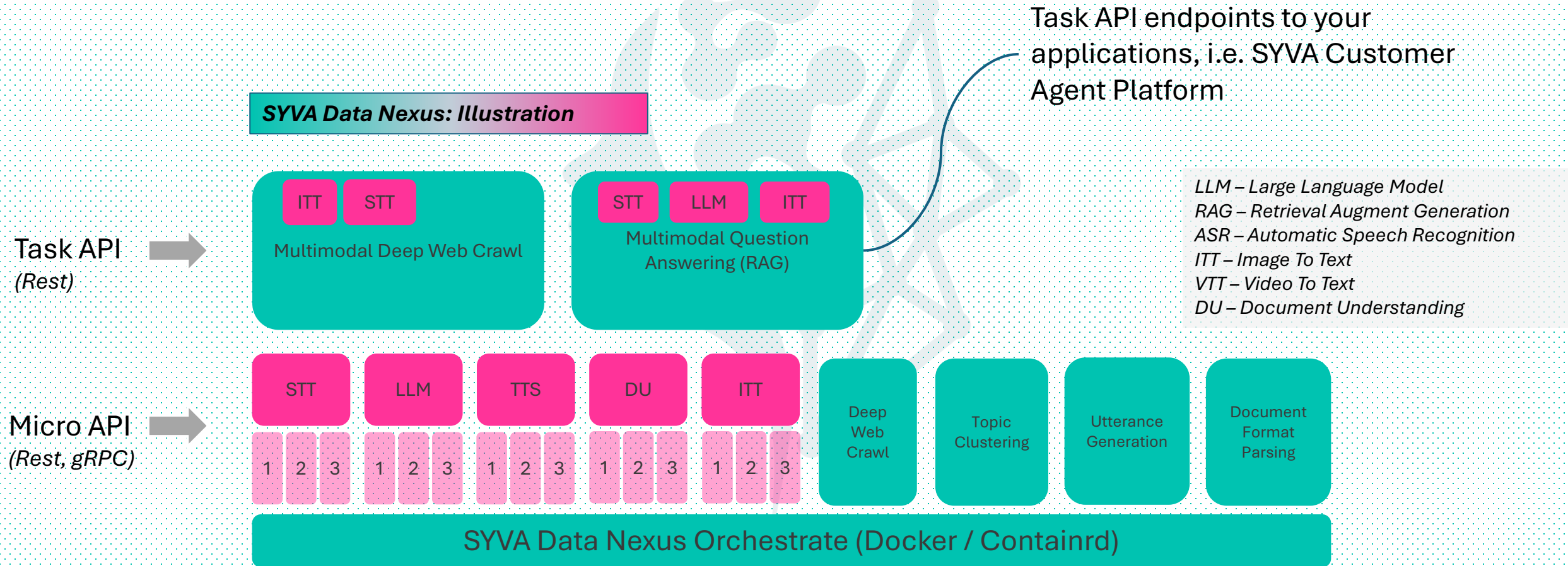
Introduction To Syva Data Nexus

SYVA Data Nexus is a comprehensive AI orchestration platform that simplifies the **integration, deployment, and management of diverse AI services** through unified APIs. It addresses the challenges of managing multiple AI capabilities and provides **scalability, flexibility, and customization** to meet diverse user needs.

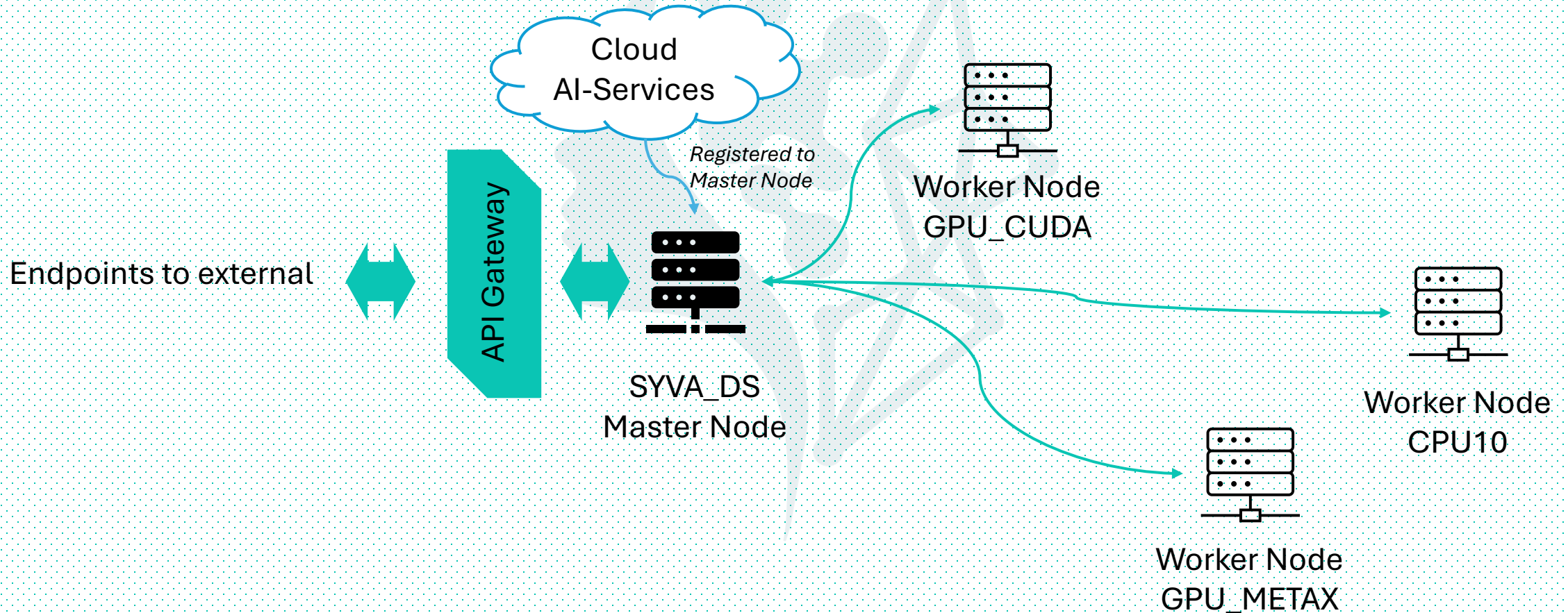
- **Unified Platform:** Central hub for various AI services.
- **Scalable and Flexible:** Easily scales horizontally for high availability.
- **Open and Customizable:** Supports tailored AI models and services.



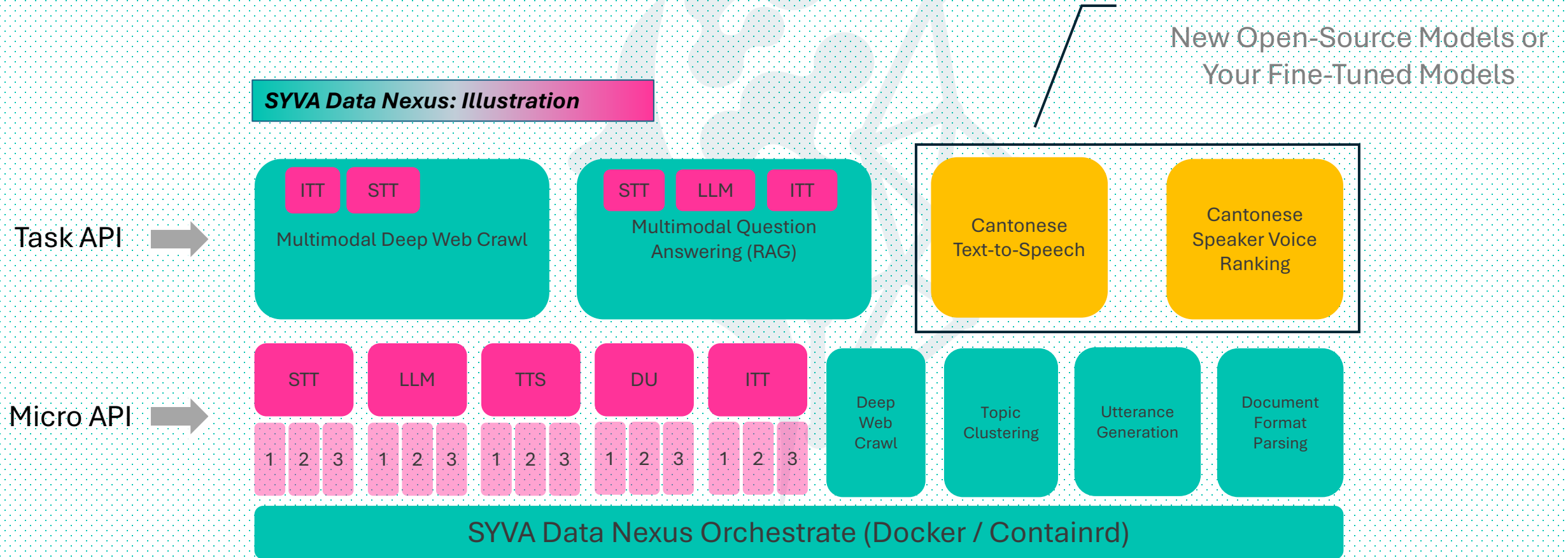
Platform Capabilities - Unified Orchestration with Scalable, Load-Balanced AI Services



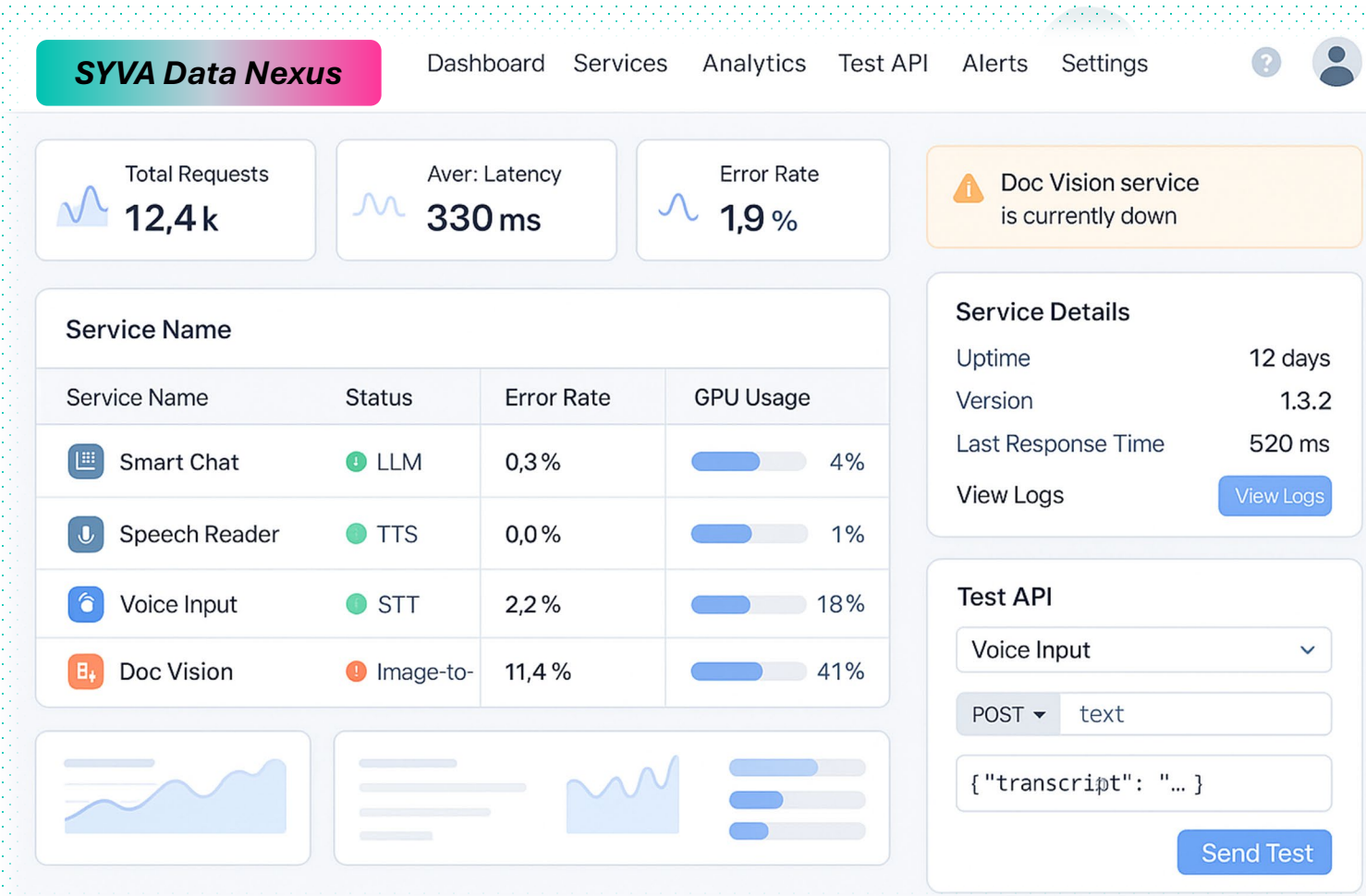
Deployment Flexibility – Hybrid Approach & Seamless GPU Platform Compatibility



Customization and Extensibility – Put Your Own Models Into Services



Management and Monitoring Portal



This is mockup screen

- **Real-Time Health:** Instantly see API status and service health.
- **Usage Analytics:** Visualize traffic, request rates, errors, and performance at-a-glance.
- **Proactive Monitoring:** Automated alerts for service degradation or failures.
- **Instant Test-Run:** Built-in tools to send test requests and review real responses—no code required.

Upcoming Feature - Automated API Generation for AI Models



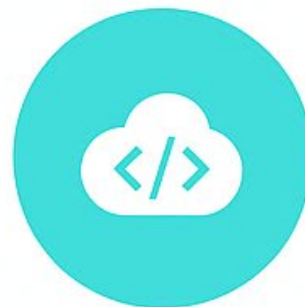
Model Metadata & Example Input

Upload model details.
inference samples, etc.



SYVA Automation Engine

Reads metadata and
auto-generates
API code/stubs



API Endpoint Generation

Instantly creates
production-ready
REST/gRPC endpoints



Test & Deploy

Dashboard lets you
test the API and
deploy live with
a click

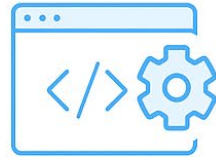
Upcoming Feature - Model Training Assistant

SVVA Data Nexus



Data Preparation

Upload, clean, and label your dataset.



Training Configuration

Select model, set parameters, and generate training scripts.



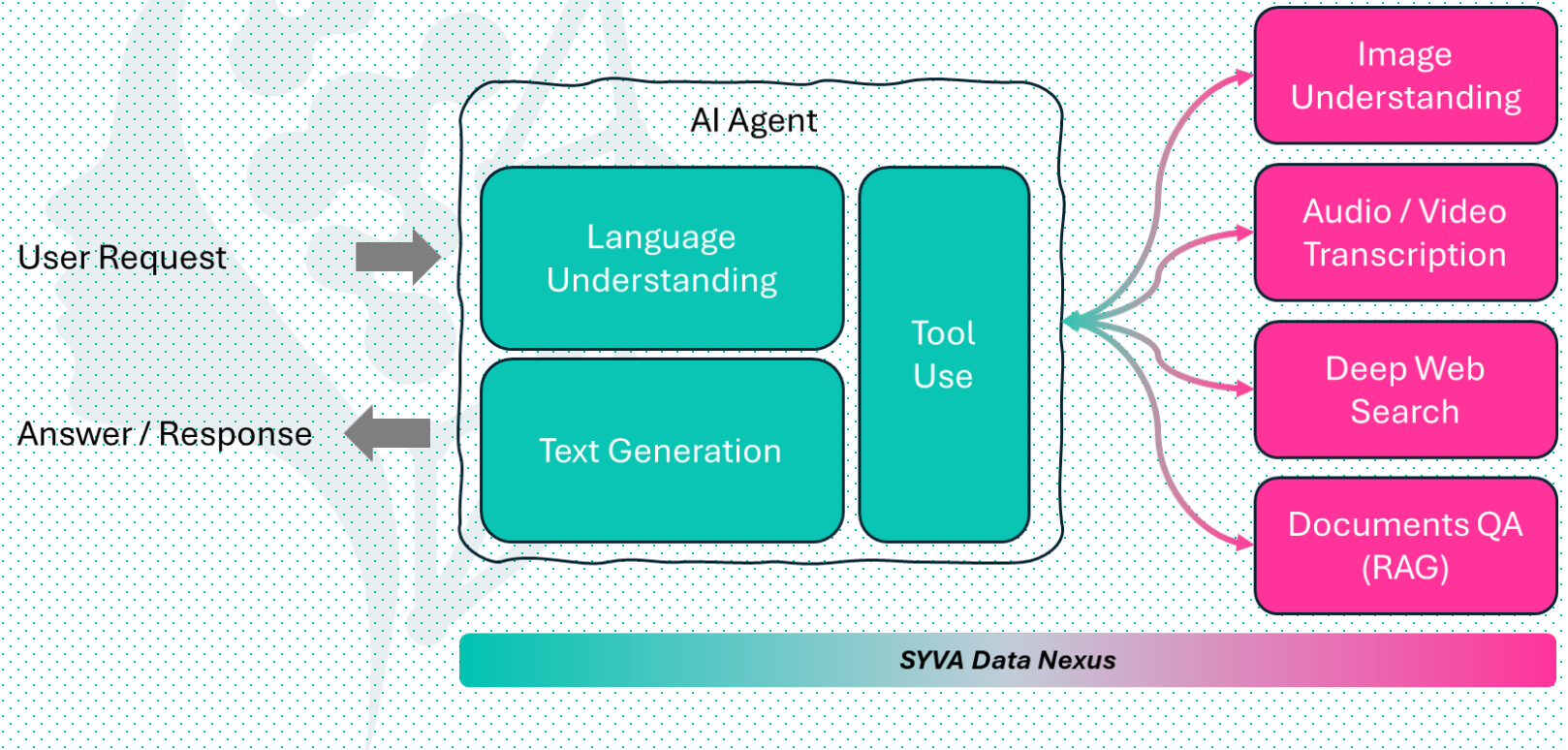
Progress & Results Explanation

Monitor training, view metrics, and get plain-language results summary.

- **Guided, no-code** workflow for model training
- **Automated data checks**, cleaning, and formatting
- **Easy configuration** of training scripts and parameters
- Real-time progress **monitoring** and visual analytics
- Plain-language **explanations** of training results
- Lower the barrier for **custom AI development**

SYVA Data Nexus: From Chatbot to AI Agent

- **SYVA Data Nexus** connects all AI services for your agent
- **Tool-use agent** - Chooses and combines the right AI tools for each task.
- Supports LLM, STT, TTS, and other **user custom models**.
- **Automates** complex workflows -not just chat
- Easy to add or **update** new tools with SYVA



Why SYVA Data Nexus Is The Future Of Enterprise AI

